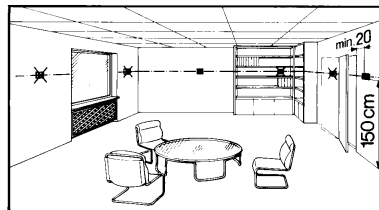
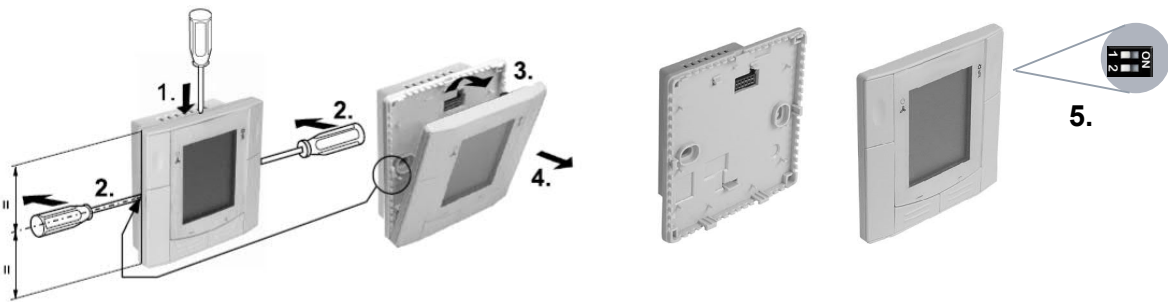


RDF300...
 RDF300.../VB
 RDF340...
 RDF400...

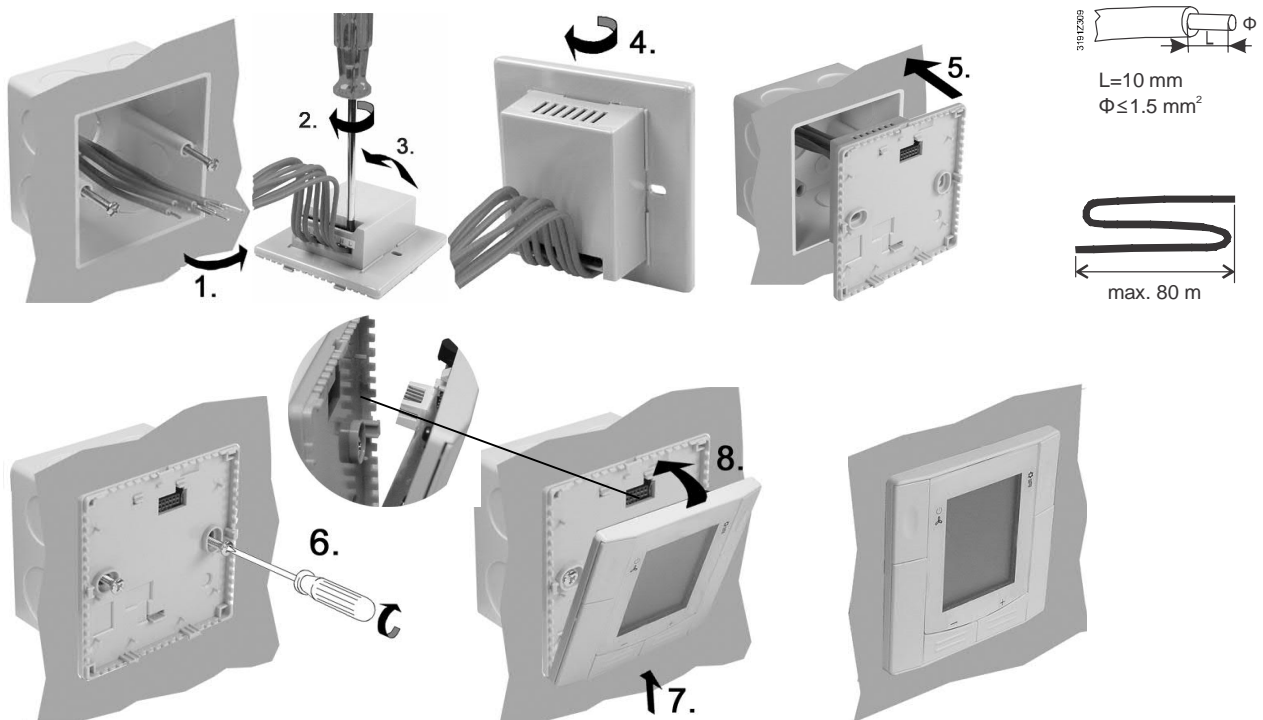
Mounting Location of Thermostat / 温控器安装位置






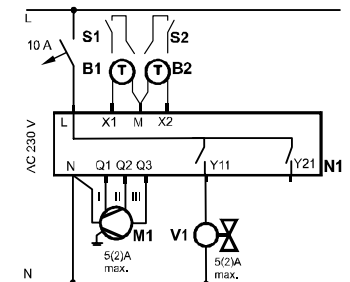
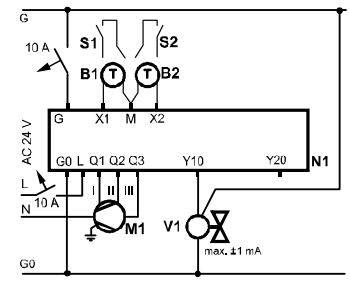
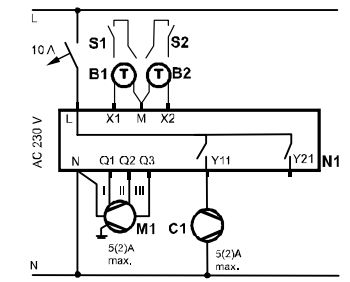

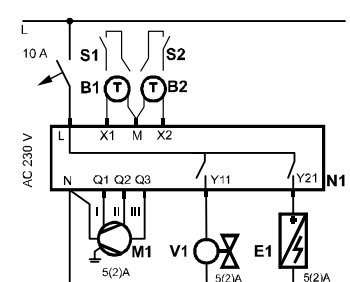
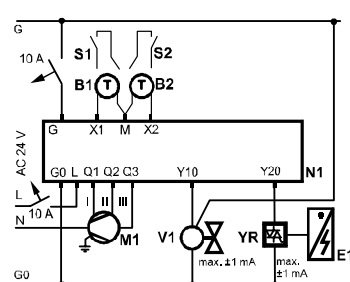
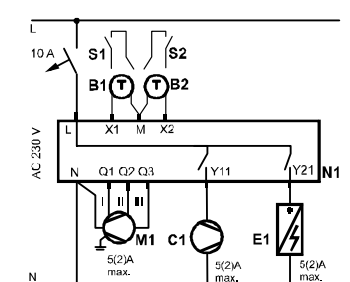

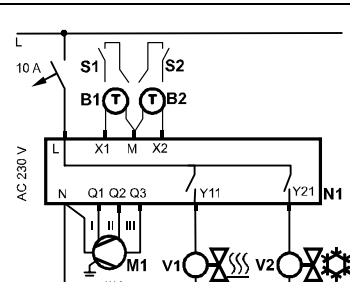
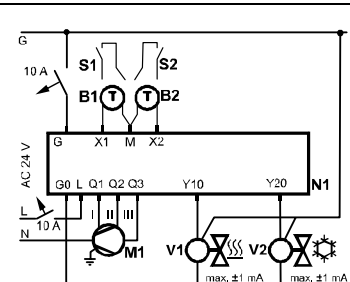
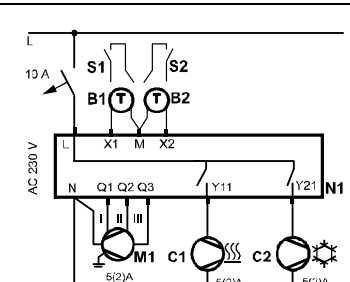

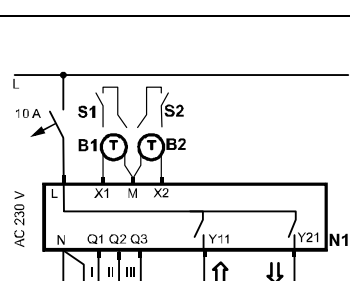
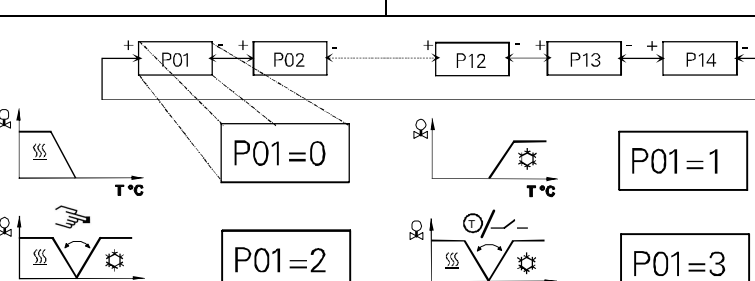
Preparation and Deliverables / 安装前准备



Flush-Mounting / 嵌入式安装



Wiring Diagrams / 接线图

Application 应用			
	RDF300... / RDF300.../VB / RDF400...	RDF340	RDF300... / RDF300.../VB / RDF400...
 2-pipe 两管制 en zh	 AC 230 V 10 A S1, S2, B1, B2, X1, M, X2, Q1, Q2, Q3, Y11, Y21, N1, M1, V1 5(2)A max. 5(2)A max. Δ L-N, Y11/Y21 AC 230 V	 AC 24 V AC 230 V 10 A G, S1, S2, B1, B2, X1, M, X2, G0, L, Q1, Q2, C3, Y10, Y20, N1, M1, V1, YR 5(2)A max. max. ±1 mA max. ±1 mA Δ G - G0, Y10/Y20 AC 24 V L - N AC 230 V	 AC 230 V 10 A L, S1, S2, B1, B2, X1, M, X2, Q1, Q2, Q3, Y11, Y21, N1, M1, C1 5(2)A max. 5(2)A max. Δ L-N, Y11/Y12 AC 230 V
 2-pipe & el. heater 两管制, 带电加热 en zh	 AC 230 V 10 A L, S1, S2, B1, B2, X1, M, X2, Q1, Q2, Q3, Y11, Y21, N1, M1, V1, E1 5(2)A max. 5(2)A max. 5(2)A max. Δ L-N, Y11/Y21 AC 230 V	 AC 24 V AC 230 V 10 A G, S1, S2, B1, B2, X1, M, X2, G0, L, Q1, Q2, C3, Y10, Y20, N1, M1, V1, YR, E1 5(2)A max. max. ±1 mA max. ±1 mA Δ G - G0, Y10/Y20 AC 24 V L - N AC 230 V	 AC 230 V 10 A L, S1, S2, B1, B2, X1, M, X2, Q1, Q2, Q3, Y11, Y21, N1, M1, C1, E1 5(2)A max. 5(2)A max. 5(2)A max. Δ L-N, Y11/Y21 AC 230 V
 4-pipe 四管制 en zh	 AC 230 V 10 A L, S1, S2, B1, B2, X1, M, X2, Q1, Q2, Q3, Y11, Y21, N1, M1, V1, V2 5(2)A max. 5(2)A max. 5(2)A max. Δ L-N, Y11/Y21 AC 230 V	 AC 24 V AC 230 V 10 A G, S1, S2, B1, B2, X1, M, X2, G0, L, Q1, Q2, C3, Y10, Y20, N1, M1, V1, V2 5(2)A max. max. ±1 mA max. ±1 mA Δ G - G0, Y10/Y20 AC 24 V L - N AC 230 V	 AC 230 V 10 A L, S1, S2, B1, B2, X1, M, X2, Q1, Q2, Q3, Y11, Y21, N1, M1, C1, C2 5(2)A max. 5(2)A max. 5(2)A max. Δ L-N, Y11/Y21 AC 230 V
 2-pipe, 3 position output 两管制, 三位控制输出 en zh	 AC 230 V 10 A L, S1, S2, B1, B2, X1, M, X2, Q1, Q2, Q3, Y11, Y21, N1, M1, V1 5(2)A max. 5(2)A max. Δ L-N, Y11/Y21 AC 230 V	 P01=0 P01=1 P01=2 P01=3 P01=4	

Legend: / 图例

N1	RDF3xx / RDF4xx	RDF3xx / RDF4xx
M1	3-speed fan	三速风机
V1, V2	Valve	阀门
C1, C2	Compressor	压缩机
E1	Electro heater	电加热
S1, S2	Operating mode switch-over contact (e.g. key card)	工作模式转换开关 (例如: 门卡)
YR	Current valve	电流阀
B1, B2	Heat/cool changeover sensor	制冷/供热转换传感器

Dimensions / 尺寸

